

LXSC-15Ds Single Jet Dry Type Vane Wheel Water Meter



Features

1. Small, light
2. Without retaining ring and lid
3. Nickel-plated body
4. Magnetic drive, lower transmission resistance
5. Sealed dry dial register ensures clear reading
6. Register can rotate not more than 360° for easily reading in any position
7. Inlet strainer

Compliance with Standard

Technical data conforms to ISO 4064 Class B standard for horizontal installation

Options

- a. U.S. gallon (USG) for selecting
- b. Meter for hot water up to 90 °C is available
- c. Impulse available

Installation Requirements

1. The meter should be installed in horizontal position with the register face upwards
2. Pipeline must be flushed before installation
3. The meter should be constantly full of water during operation

Application

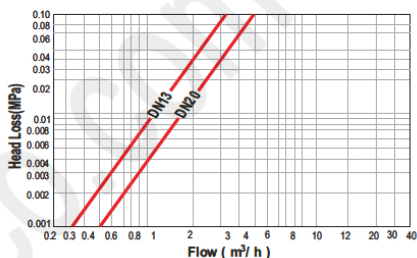
Measuring the volume of cold potable water passing through the pipeline

Working Conditions

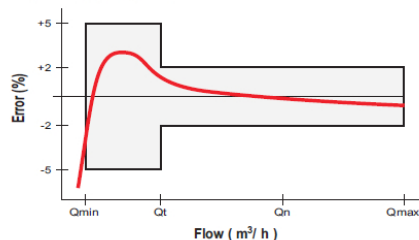
Water temperature: ≤ 40 °C (90 °C)

Water pressure: ≤ 1.6 MPa

Head Loss Curve



Accuracy Curve



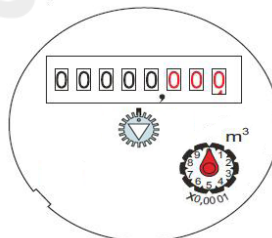
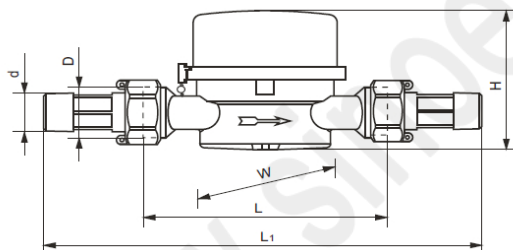
Main Technical Data

Nominal diameter		DN	13	20
Maximum flow rate	m ³ /h	Qmax	3.0	5.0
Nominal flow rate	m ³ /h	Qn	1.5	2.5
Transition flow rate	l/h	Qt	120	200
Minimum flow rate	l/h	Qmin	30	50
Maximum reading	m ³	99999.99995		
Minimum reading	m ³	0.00005		

Maximum Permissible Error:

In the lower zone from Qmin inclusive up to but excluding Qt is ±5%

In the upper zone from Qt inclusive up to and including Qmax is ±2%



Dimensions and Weights

Nominal diameter	DN	13	20
Body thread	D	G3/4B	G1B
Connector thread	d	R1/2	R3/4
Body lengthmm	L	80/110	130
Overall lengthmm	L ₁	174/204	234
Widthmm	W	76	76
Meter heightmm	H	72.5	73
Weight without connectorsKg		0.44/0.52	0.62
Weight with connectorsKg		0.62/0.7	0.9

"L1" is the total length when coupling gaskets without compression