

LXSG-15E Multi-jet Dry Type Vane Wheel Water Meter



Application

Measuring the volume of cold potable water passing through the pipeline

Working Conditions

Water temperature: $\leq 40\text{ }^{\circ}\text{C}$

Water pressure: $\leq 1.6\text{ MPa}$

Features

1. With external regulating device
2. Magnetic drive, lower transmission resistance
3. Magnetic shield, use for external magnetic field protection
4. Evacuated and sealed dry dial register ensures clear reading
5. Inlet strainer
6. There are two versions DN50 meter body to be chosen:
With threaded ends or flanged ends

Compliance with Standard

Technical data conforms to ISO 4064 Class B standard for horizontal installation

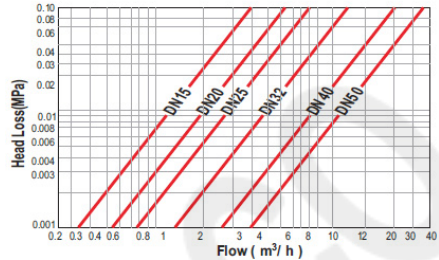
Options

- a. Meter with no return valve(different price) is available except LXSG-50E
- b. Meter for hot water up to 90 C is available
- c. Meter equipped with reed switch is available

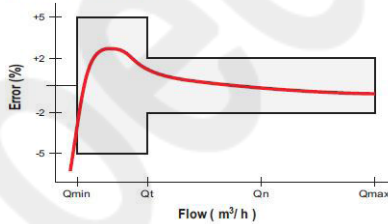
Installation Requirements

1. The meter can be installed in horizontal position
With the register face upwards
2. Pipeline must be flushed before installation
3. The meter should be constantly full of water during operation

Head Loss Curve



Accuracy Curve



Main Technical Data

Nominal diameter	DN	15	20	25	32	40	50
Maximum flow rate	m^3/h Qmax	3.0	5.0	7.0	12	20.0	30.0
Nominal flow rate	m^3/h Qn	1.5	2.5	3.5	6.0	10.0	15.0
Transition flow rate	l/h Qt	120	200	280	480	800	3000
Minimum flow rate	l/h Qmin	30	50	70	120	200	450
Maximum reading	m^3	99999.99995			999999.99995/999999.9995		
Minimum reading	m^3	0.000 05			0.00005/ 0.0005		

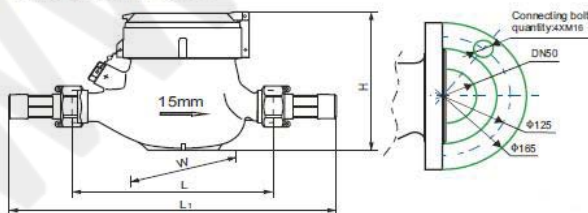
Maximum Permissible Error:

In the lower zone from Qmin inclusive up to but excluding Qt is $\pm 5\%$

In the upper zone from Qt inclusive up to and including Qmax is $\pm 2\%$

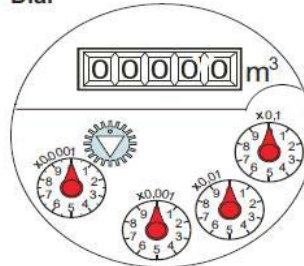
Dimensions and Weights

Dimension Picture



- Nominal diameter and arrow are indicated on the side of the meter body.
- Arrow is indicated on the other side. The lid can open more than 180°.

Dial



Nominal diameter	DN	15	20	25	32	40	50
Body thread	D	G3/4B	G1B	G1 $\frac{1}{4}$ B	G1 $\frac{1}{2}$ B	G2B	G2 $\frac{1}{2}$ B
Connector thread	d	R1/2	R3/4	R1	R1 $\frac{1}{4}$	R1 $\frac{1}{2}$	R2
Body length	mm L	165	190	260/225	260/230	300/245	300/280
Overall length	mm L ₁	259	294	380/345	384/354	431/376	448/428
Width	mm W	94	94	98	98	122	145
Meter height	mm H	107.5	107.5	117.5	117.5	141.5	177
Weight without connectors	Kg	1.5	1.7	2.6/2.4	2.8/2.7	5.1/4.8	8.5/8.2
Weight with connectors	Kg	1.68	1.98	3.12/2.92	3.6/3.5	6.14/5.84	10.22/9.92

Nominal diameter	DN	15				20	
Body length for selecting	mm L	110	130	145	170	190	160

"L1" is the total length when coupling gaskets without compression