



PRODUCT CATALOGUE



宁波保税区亿科国际贸易有限公司

Ningbo Free Trade Zone ECO International Co., Ltd

地址：宁波天童北路1501号麒麟大厦608室 邮编P.C:315100

Add: 608, 1501 Tiantong Road N., Ningbo 315100, China

电话Tel: 0086-574-87065432

手机M.P.: 008613806664662

Fax: 0086-574-87756802

E-mail: info@sinoeco.com

Website: www.sinoeco.com

Skype: sinoeco.com



www.sinoeco.com

Ningbo Free Trade Zone ECO International Co., Ltd

Company Profile

Ningbo Free Trade Zone ECO International Co., Ltd (ECO CO) is an intergrating of technology, manufacturing, and foreign trade, registered in Ningbo, China on Nov.7th, 2000. We are mainly working in brass valves, heating system, pipe fittings, kitchen & bathroom, showers and taps and measuring system.

In 2006, ECO CO won a Certificate En1359 for diaphragm gas meter G1.6, G2.5. In 2012, ECO CO got an approved of Atext report Ex ia II Bt3 Ga of motor valve for diaphragm Gas meter G1.6, G2.5, G4. In 2015, ECO CO developed an AMR wireless prepaid woltman bulk water meter. This smart bulk water meter can stable operate and precise measure, so it is highly appreciated by our client. Our AMR system use Zigbee & GPRS technology. The concentrator can control smart water meter, electric meter and gas meter at a same time.



Still now, we have more than six strategic cooperation ISO9001 factories for different products in meters, valves and sanitary and plumbing. The products are mainly exported to Europe, America and Southeast Asia, specially Italy, Germany, Russia and Singapore. With High quality and excellect service, clients are all very satisfied with our company.

ECO CO not only supply high quality products, but also excellent service for client, specially technical support. We can offer product drawing, new product creating,

product sourcing, packing design, quality control, shipment plan, documents, payment control and financing. Through staff members' diligent work, ECO CO got a good reputation and a big success in fiece competition.



“Quality products, Reasonable price, Best & fast service” are out three advantages. We are looking forward to building good business cooperation and friendship with all the customers all around the world.





Wireless Prepaid Gas Meter G1.6, G2.5, G4

Basic Function

Computerized management and billing by gas supply companies
Prepayment of bills with computer technology and IC card to prevent long-term arrears

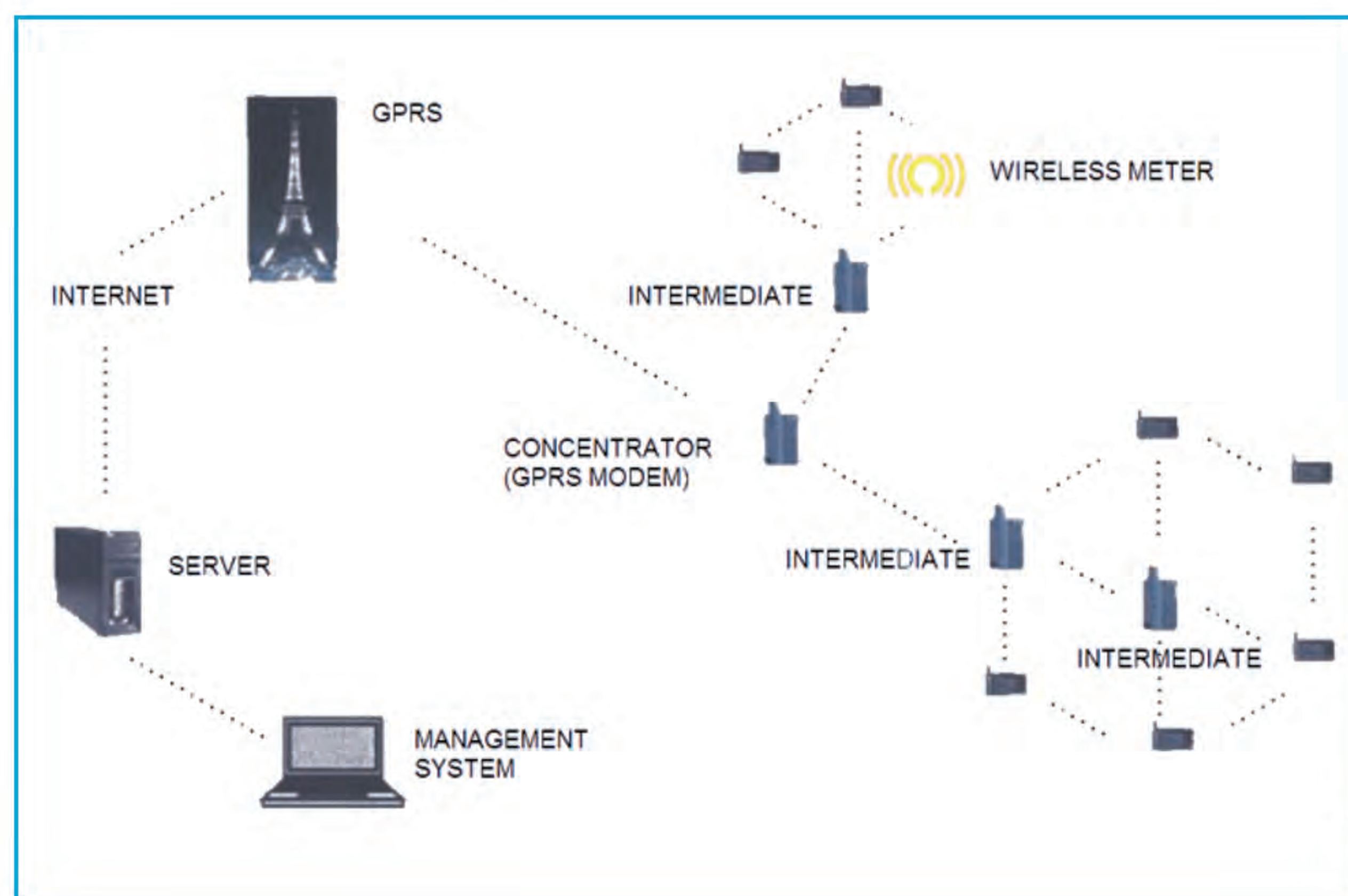
When water flow exceeds the maximum flow rate, the built-in valve will be automatically closed

Effective anti-theft design

Main Technical data

Type	Cyclic volume	Qn	Qmax	Qmin	Qs	Min. reading	Max. reading
	dm ³ at Tb=15°C	m ³ /h			dm ³ /h	dm ³	m ³
G1.6	1.2	1.6	2.5	0.016	2	0.2	99999.999
G2.5	1.2	2.5	4	0.025	2	0.2	99999.999
G4	1.2	4	6	0.04	2	0.2	99999.999

Schematic diagram



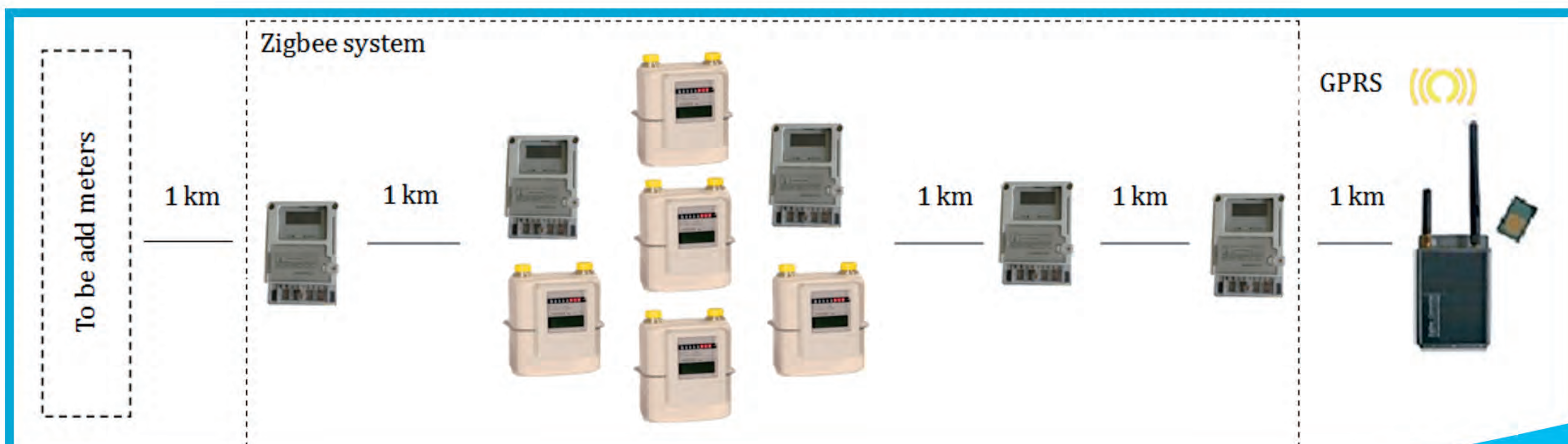
Explanation: after the installation of electric meter, we just add gas meter to the system.

Ensure the gas meter is 1 km to one electric meter.

Two wireless system: Zigbee and GPRS
meter-meter: Zigbee
meter-concentrator: Zigbee
concentrator-internet: GPRS

Very easy to add meters.

Meter installed then after to enter the system automatically.

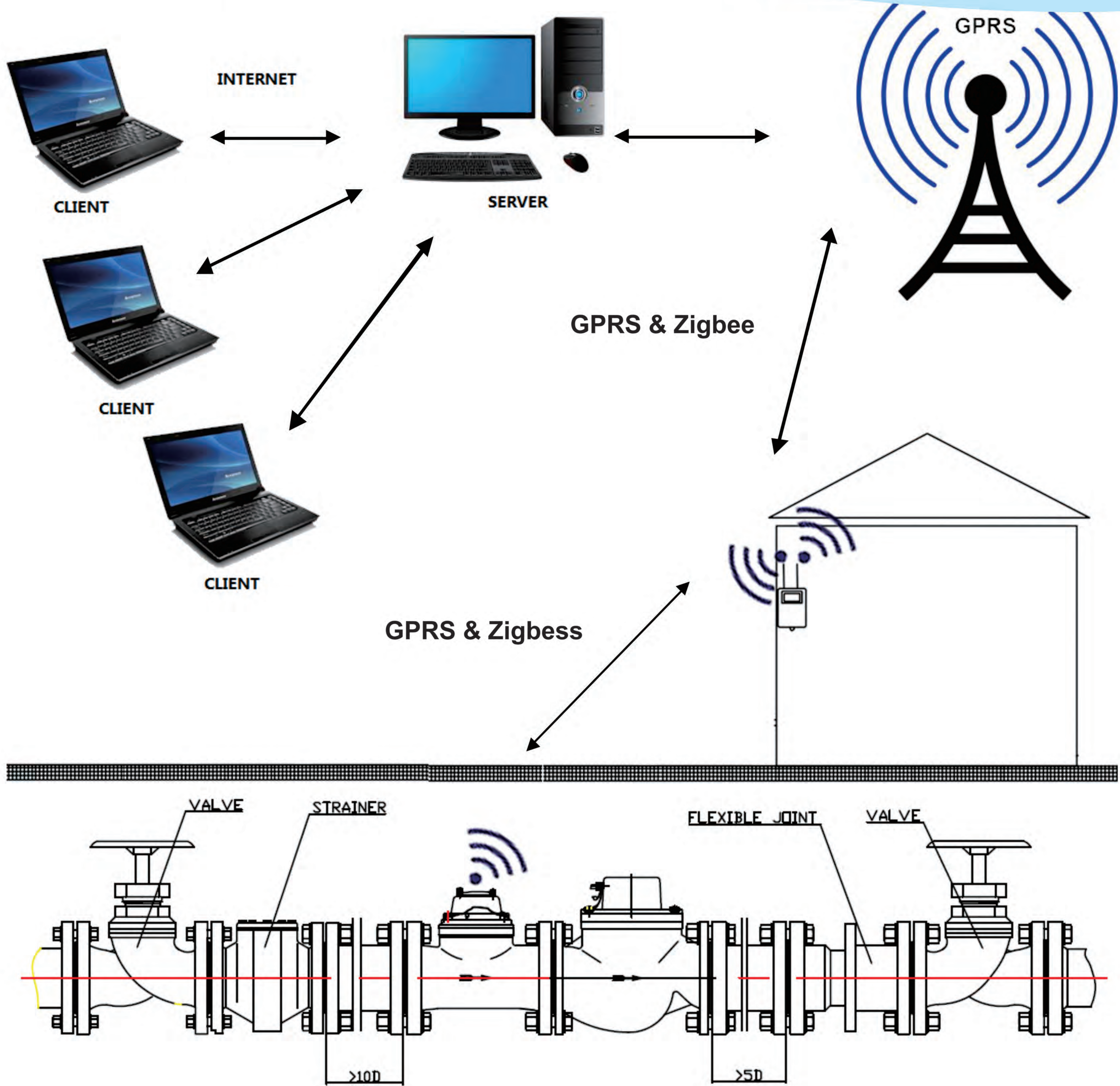




www.sinoeco.com

Ningbo Free Trade Zone ECO International Co., Ltd

Wireless Prepaid Removable Element Woltman Water Meter



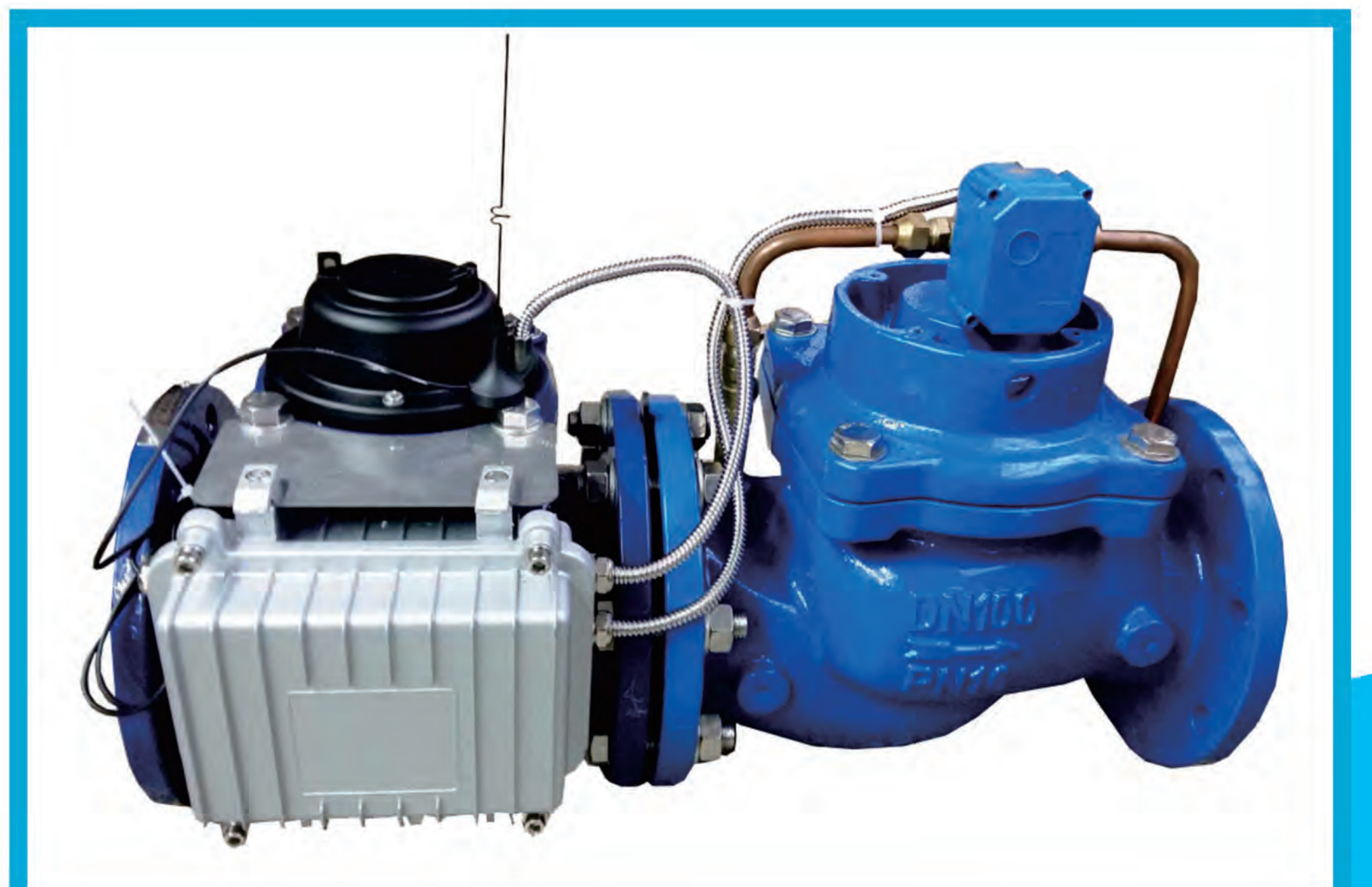
Removable element structure, easy installation and maintenance,
register for universal use within this range detachable without
removing the meter from pipeline

Technical data conforms to ISO 4064 Class B standard

Computerizing management,
GPRS wireless, prepaid function

Dry dial, magnetic drive, small pressure loss

Selected high quality materials for steady
and reliable characteristic





www.sinoeco.com

Ningbo Free Trade Zone
ECO International Co., Ltd



Single Jet Water Meter

ISO 4064 Class B Standard

Small, light

Without retaining ring and lid

Nickel-plated body

Magnetic drive, lower transmission resistance

Sealed dry dial register ensures clear reading

Register can rotate not more than 360°

Inlet strainer

With reed switch optional

Working Conditions

Water temperature: $\leq 40^{\circ}$

Water Pressure: $\leq 1.6\text{MPa}$

single jet dry dial brass water meter

single jet wet dial plastic water meter

single jet liquid sealed water meter

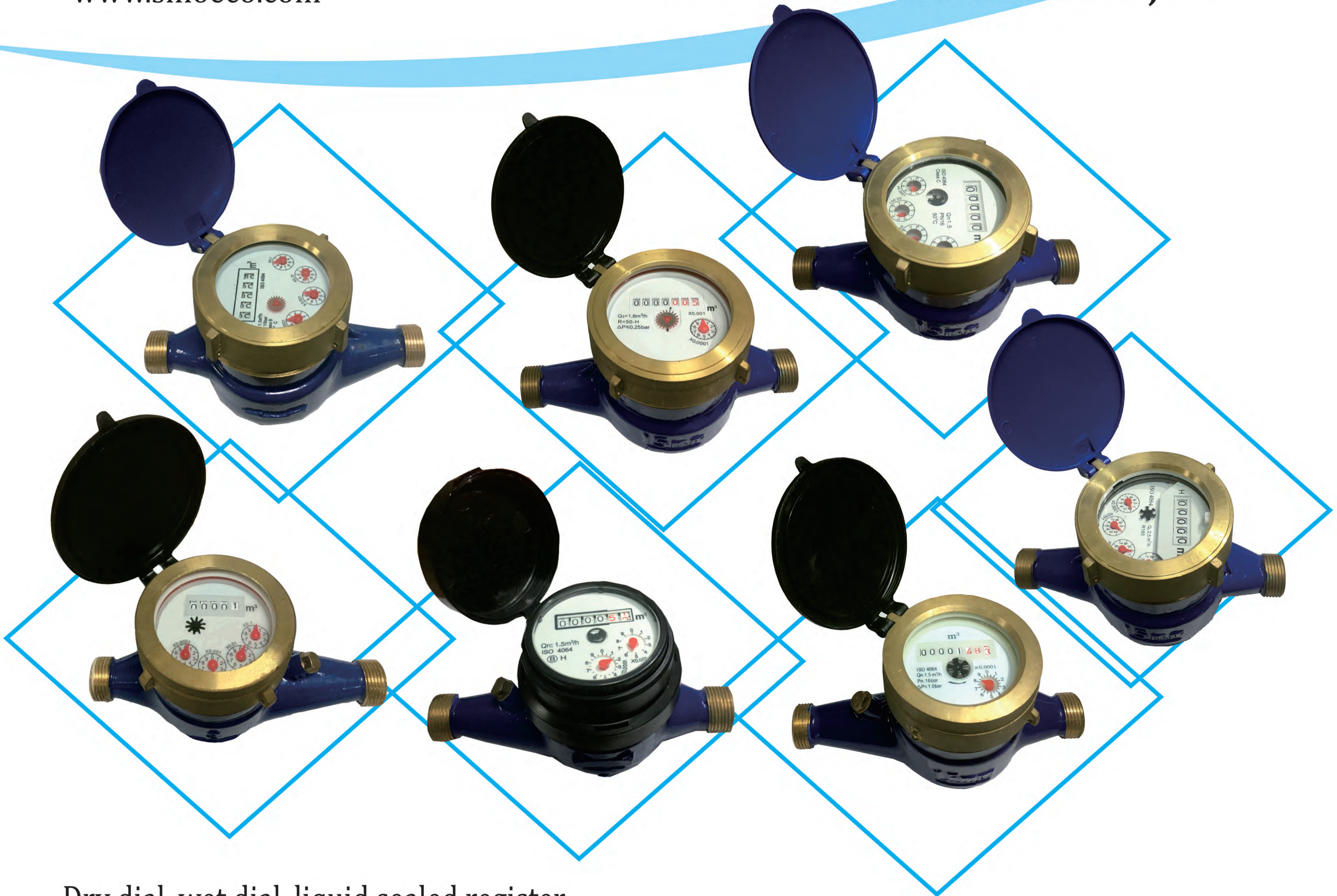
single jet impulse water meter

ISO 4064-1:2005



www.sinoeco.com

Ningbo Free Trade Zone
ECO International Co., Ltd



Dry dial, wet dial, liquid sealed register
Class B / Class C, R80 / R100 / R160
With external regulating device
Magnetic drive, lower transmission resistance
Magnetic shield, use for external magnetic field protection
Inlet strainer, with reed switch optional
There are two version Dn50 meter body to be chosen:
Thread ends or flanged ends

Multi Jet Water Meter

Working Conditions
Water temperature: $\leq 40^{\circ}$
Water Pressure: $\leq 1.6\text{MPa}$

- multi jet dry dial brass water meter
- multi jet wet dial plastic water meter
- multi jet liquid sealed water meter
- multi jet impulse water meter



ISO CE



www.sinoeco.com

Ningbo Free Trade Zone ECO International Co., Ltd



WPH--Removable Element Woltman Water Meter

1. Removable element structure, easy installation and maintenance, register for universal use within the range detachable without removing the meter from pipeline
2. Dry dial, magnetic drive sensitive action, small pressure loss
3. Vacuum sealed register ensures the dial keep free from fog and keep the reading clear in a long term service
4. Selected high quality materials for steady & reliable characteristic
5. Technical data conform to international standard ISO 4064 Class B
6. Can be with reed switch (optional)
7. Work temperature: 0° C ~ 50° C (0° C ~ 90° C for hot meter)
work pressure: Pn10 or Pn16
8. Test maximum permissible error:
In the lower zone from Qmin inclusive up to but excluding Qt is $\pm 5\%$
In the upper zone from Qt inclusive up to and including Qmax is $\pm 2\%$

LXF--Combination Flanged Water Meter

The meter model LXF 50 ~150 combines a large caliber water meter (WPH) on the main line, a small water meter (multi jet water meter) on the bypass line, and a flow changeover valve.

Installation: a. the meter must be installed with the direction of the flow as indicated by the arrow cast in the meter body. b. a horizontal position with the register face upwards is recommended. c. the meter must have ten diameters straight pipe ahead of the meter and five diameters straight pipe after to insure proper flow through the meter. d. the valve must be installed in the front and the back of the water meter

1. Wide massuring range: from Qmin of the small caliber water meter to Qmax of the large caliber water meter
2. As a dry meter, deposits in the register are avoided. This ensures a clear reading in long term service
3. The main register may rotate more than 360 degrees for easily reading in any position
4. Low head loss, lower starting flow, novel structure, simple maintenance
5. The combination meter can be used for a remote reading transmission system as equipped with a built-in sensor
6. Particularly suited in commercial, institutional places of assembly & facilities with fluctuating use and flow rate



WI--Agriculture Irrigation Flanged Woltman Water Meter

1. Magnetic coupling register insulated from water for its long life of service and clear reading
2. Dry dial, negligent pressure-loss, big flow capacity and water hammer resistance
3. Vacuum sealed register ensures the dial keep free from fog and keep the reading clear in a long term service
4. The water meter is very suitable to use for raw water and irrigation water.
5. Technical data conform to international standard ISO 4064 Class A
6. Can be with reed switch (optional)
7. Work temperature: 0° C ~ 50° C (0° C ~ 90° C for hot meter)
work pressure: Pn10 or Pn16
- 8 The dial can be chosen from plastic dial, brass sealed dial, grass dial.

WS--Removable Vertical Helix Woltman Water Meter

1. High sensitivity due to the vertical helix turbine directly magnetic coupling with the register
2. Dry dial, magnetic drive, protected by the steel cover, forever clean and legible dial for reading
3. The register can be 360 degrees rotated.
4. High accuracy, wide flow range, removable measuring unit
5. Temper-proof internal adjusting device
6. High wear-resisting bearing for its stable operation and long life of measurement
7. Special straight pipes are not needed for installation, as the internal measuring unit with stainless steel strainer for easy fitting and maintenance
8. Removable mechanism is easy to replace or fix and not required detaching the body from the pipeline
9. Pulse emitter can be installed to this type of the remote reading (option)





www.sinoeco.com

Ningbo Free Trade Zone ECO International Co., Ltd



Flow meter is made up of sensors and converters. Its main features are compact structure, convenient installation, high measuring precision, good anti-interference.

Flow Meter Series

Electromagnetic Flowmeter Series

Vortex Flowmeter Series

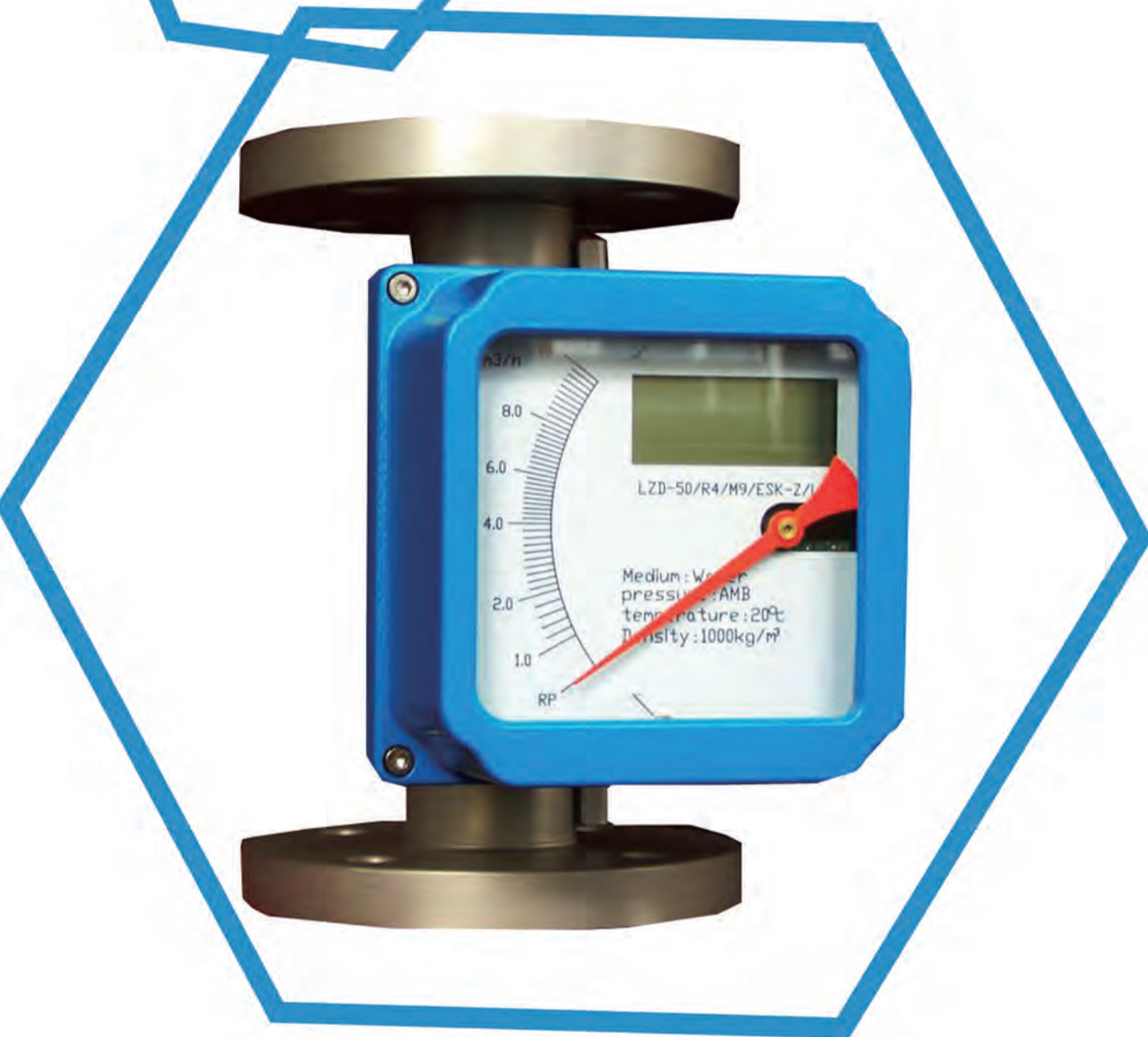
Turbine Flowmeter Series

Orifice Flowmeter Series

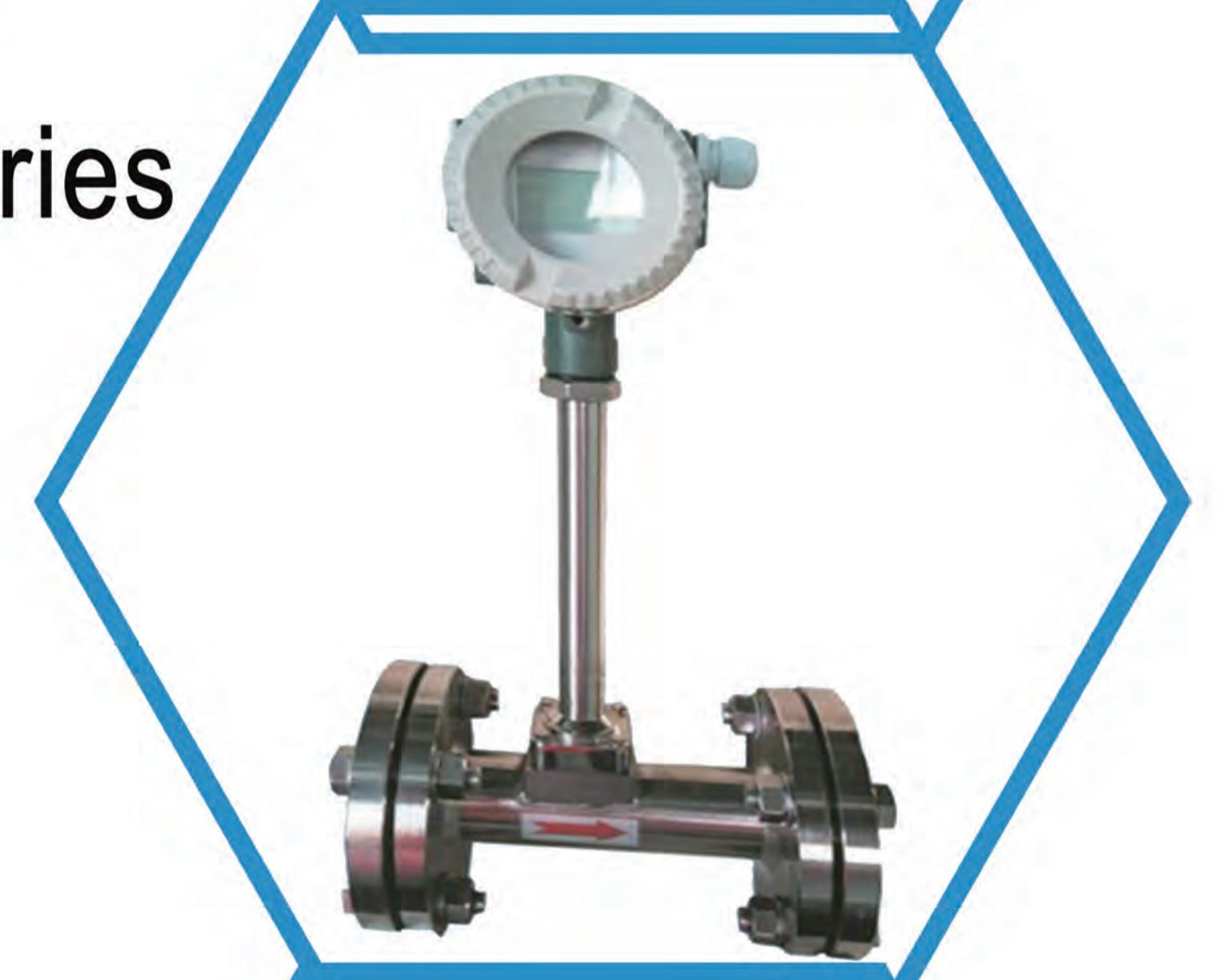
Plastic Pipe Flowmeter Series

Metal Tube Pipe Flowmeter Series

Glass Rotameter Series



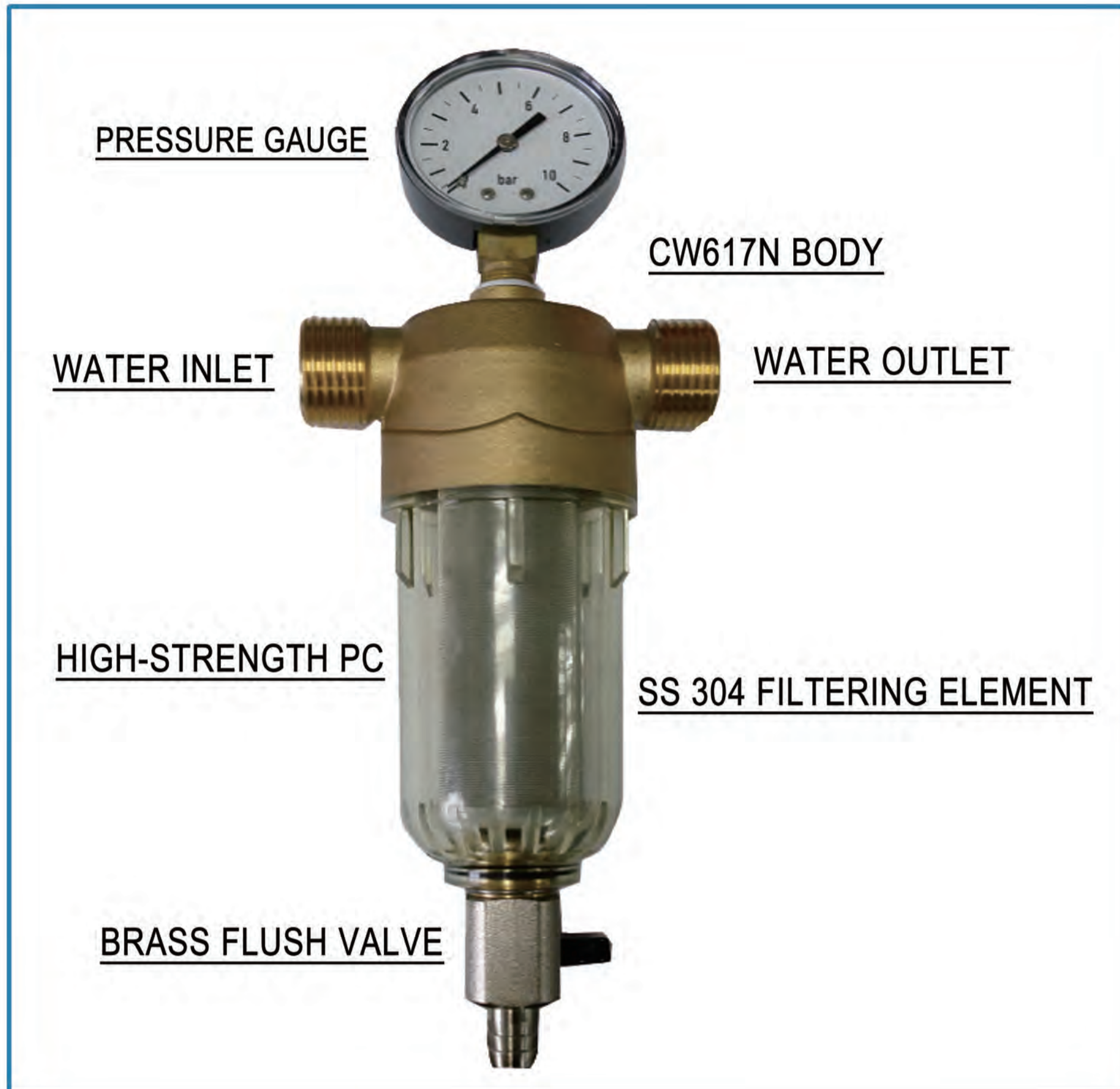
Flow meter is widely used in water (tap water, industrial water, and sewage treatment) metallurgy, chemical, textile, food, paper, power, pharmaceutical and other industrial areas. It applies to measure (is fit for the measurement of) the volume flow of conductive medium including the acid, alkali, salt solution, pulp, slurry, waste water





www.sinoeco.com

Ningbo Free Trade Zone ECO International Co., Ltd

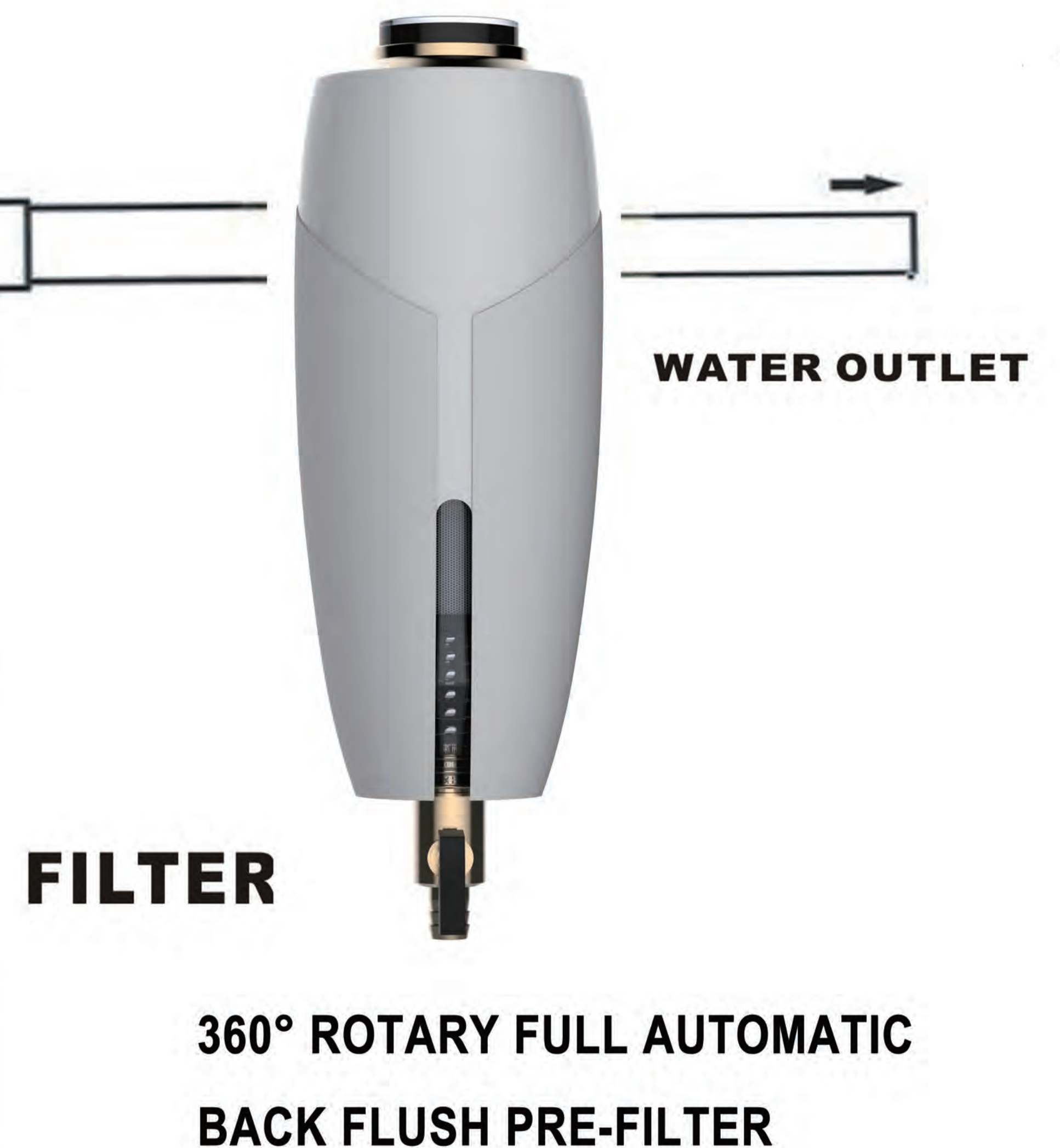
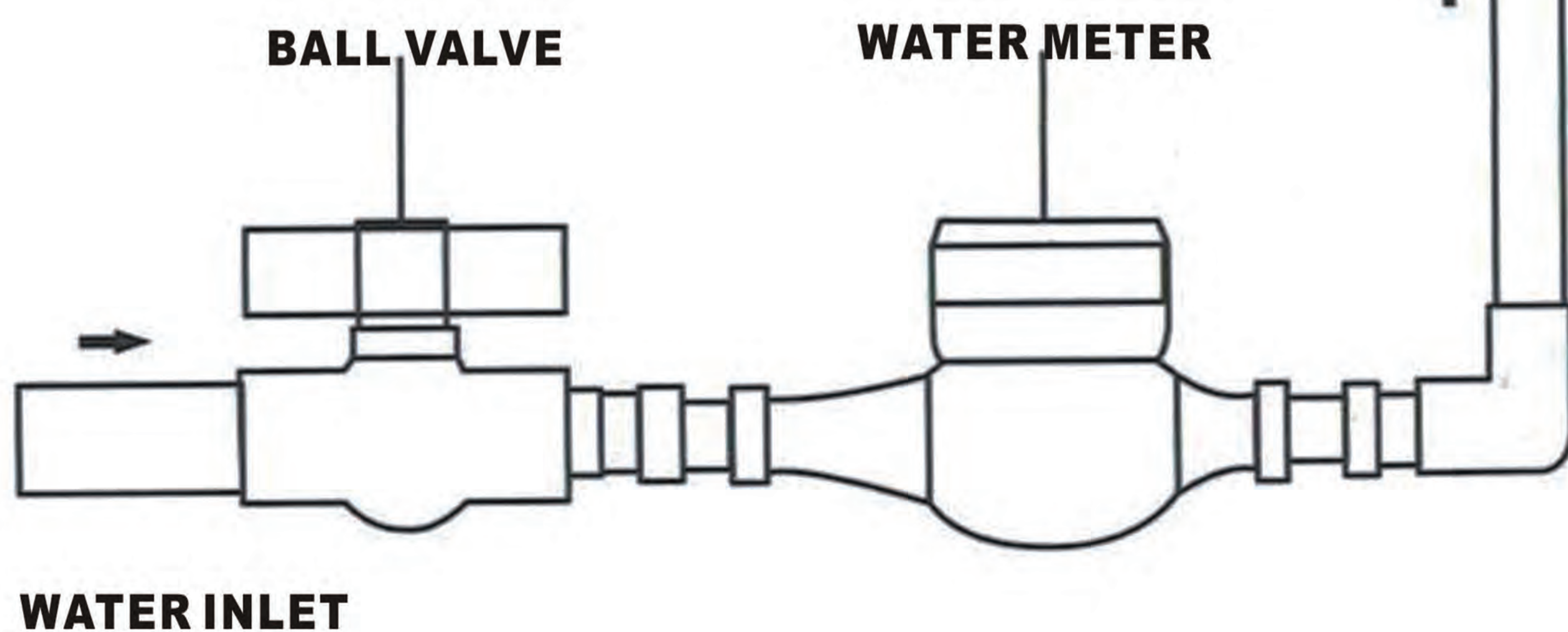


ECO pre-filter should be installed behind the domestic water meter. It can filter out rust, silt, suspended particles and other tiny things (>100um or >40um) effectively, and so that ensure our clear and safe water. Our company often produce brass filter parts with brass CW617N. Material brass CW617N has environmental advantages of low lead and low nickle, thus reducing the health damage.

Brass Pre-filter / Strainer



Brass water pre-filter
 Brass back flush filter
 Brass monthly clean filter





www.sinoeco.com

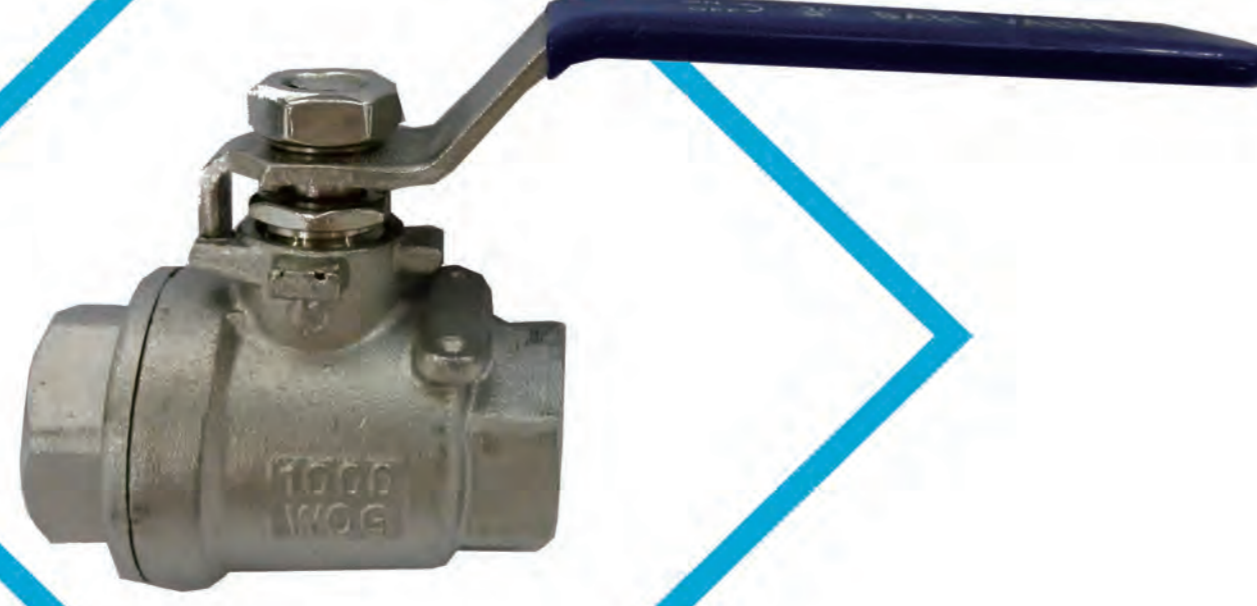
Ningbo Free Trade Zone
ECO International Co., Ltd

Valves have many uses, including controlling water for irrigation, industrial uses for controlling processes, residential uses such as on/off and pressure control to dish and clothes washers and taps in the home. Even aerosols have a tiny valve built in. Valve are also used in the military and transport sectors.

SS & WCS Valve Series

- SS / WCS / Ductile Iron Flanged Ball Valves
- SS / WCS / Ductile Iron Flanged Stop Valves
- SS / WCS / Ductile Iron Flanged Gate Valves
- SS / WCS / Ductile Iron Flanged Check Valves
- SS / WCS / Ductile Iron Butterfly Valves
- SS / WCS / Ductile Iron Globe Valves
- SS / WCS / Ductile Iron Filter Strainers
- SS / WCS Pressure Release Valves
- SS / WCS / Ductile Iron Safety Valves
- Stainless Steel Threaded Screwed Valves
- Stainless Steel Sanitary Polished Valves

Valves may be operated manually, either by a handle, lever, pedal or wheel. Vavles may also be automatic, driven by changes in pressure, temperature, or flow. These changes may act upon a diaphragm or piston which in turn activates the valve.



ISO CE



A valve is a device that regulates, directs or controls the flow of a fluid (gases, liquids, fluidized solids, or slurries) by opening, closing, or partially obstructing various passageways.

Brass Valve Series

- Brass threaded screwed ball valve
- Brass threaded screwed stop valve
- Brass threaded screwed check valve
- Brass threaded screwed angle valve
- Brass threaded screwed filter strainer
- Brass manifolds series
- Brass boiler drain series
- Brass bibcock taps series
- Brass threaded screwed gate valve
- Brass threaded screwed radiator valve

In an open valve, fluid flows in a direction from higher pressure to lower pressure. The main parts of the most usual type of valve are the body and the bonnet. These two parts form the casting that holds the fluid going through the valve. Valve is derived from the Latin valva, the moving part of a door, in turn from volvere, to turn, roll.

ISO CE

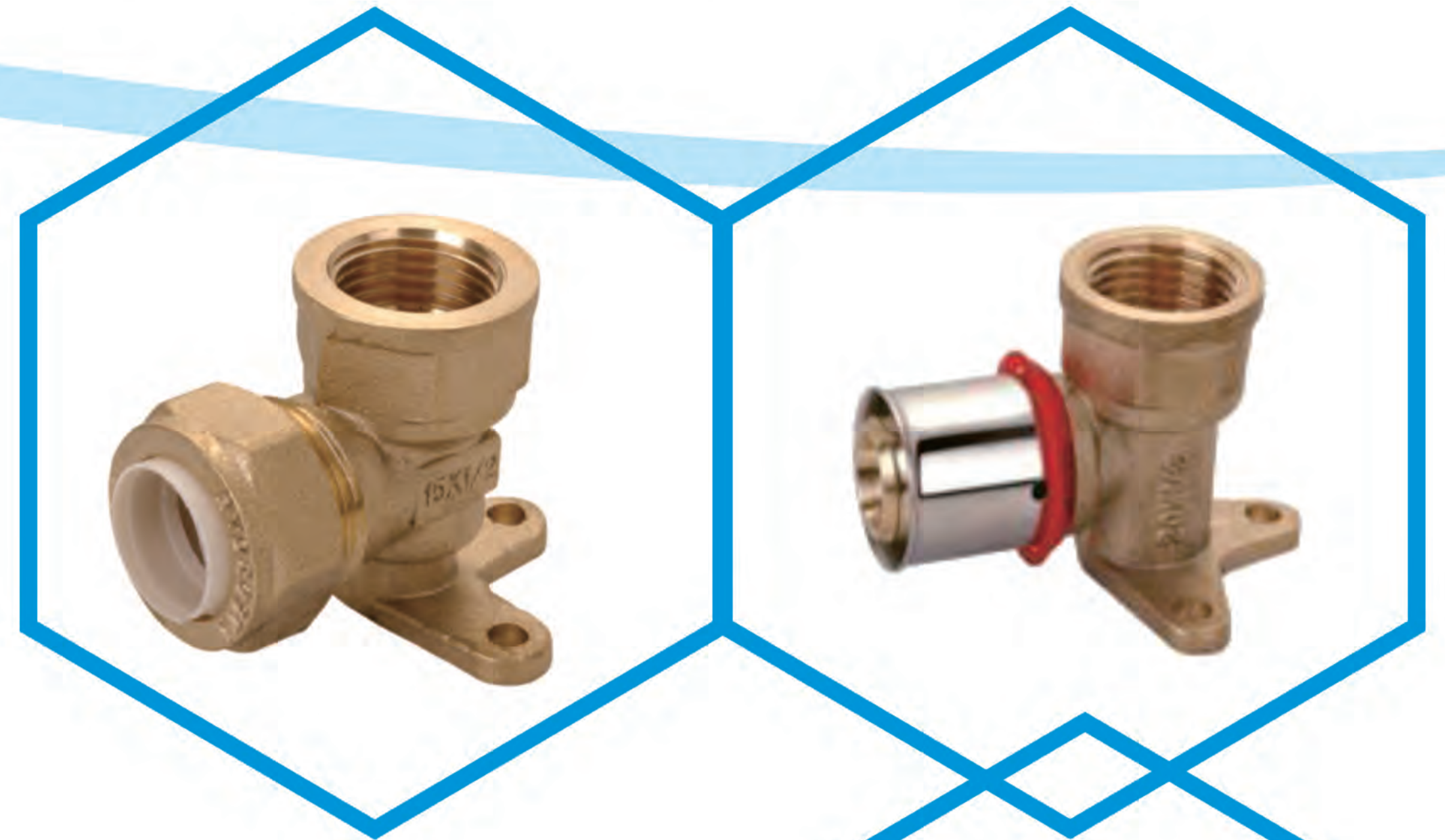




www.sinoeco.com

Ningbo Free Trade Zone ECO International Co., Ltd

Fitting provides a positive reliable seal under vibration conditions, mechanical shock or tube movement. The sleeve cushions the tubing, permitting the tube to flex back and forth in the fitting. Positive nut stop bottoms nut on body requiring only visual inspection.



Brass Pipe Fitting Series

- Brass clamping Pex Al Pex fitting
- Brass bite Pex Al Pex fitting
- Brass compress Pex pipe fitting
- Brass PP-R pipe fitting
- Brass threaded screw fitting
- Brass Spanish PE pipe fitting
- Brass French PE pipe fitting
- Brass press fitting
- Brass union joint fitting
- Brass USA push quick connector fitting
- Brass DZR fitting
- Brass garden hose fitting
- Brass hose barb fitting



Brass tubing is most often used for supply of hot & cold water. Brass tubing is joined using flare fitting, compression fitting, press fitting, threaded screwed fitting, or solder.

ISO CE



www.sinoeco.com

Ningbo Free Trade Zone ECO International Co., Ltd

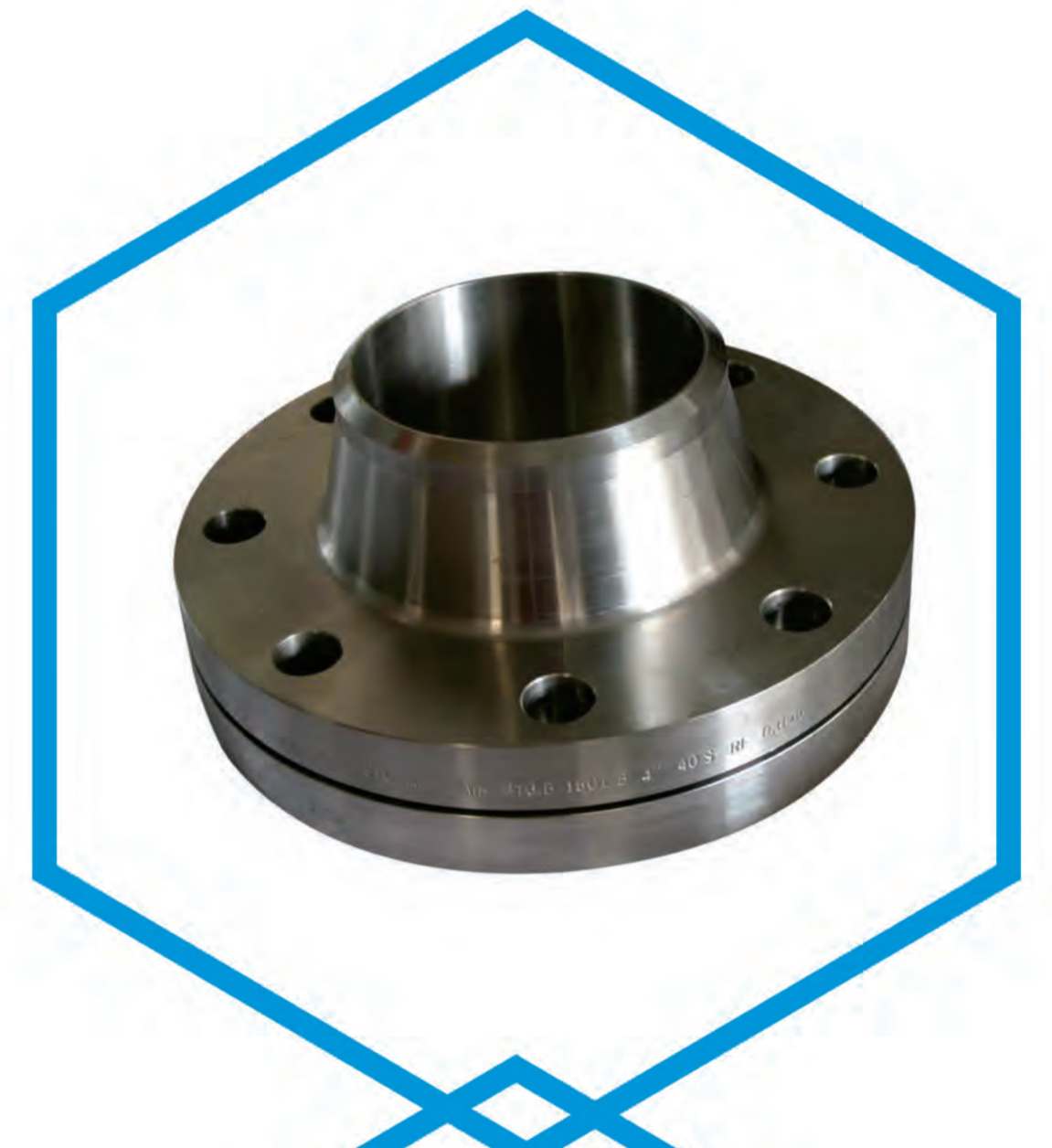


Pipe fitting or pipe is the occupation of installing or repairing piping or tubing systems that convey liquid, gas, and solid materials. This work involves selecting and preparing pipe or tubing, joining it together by various means, location and repair leaks.

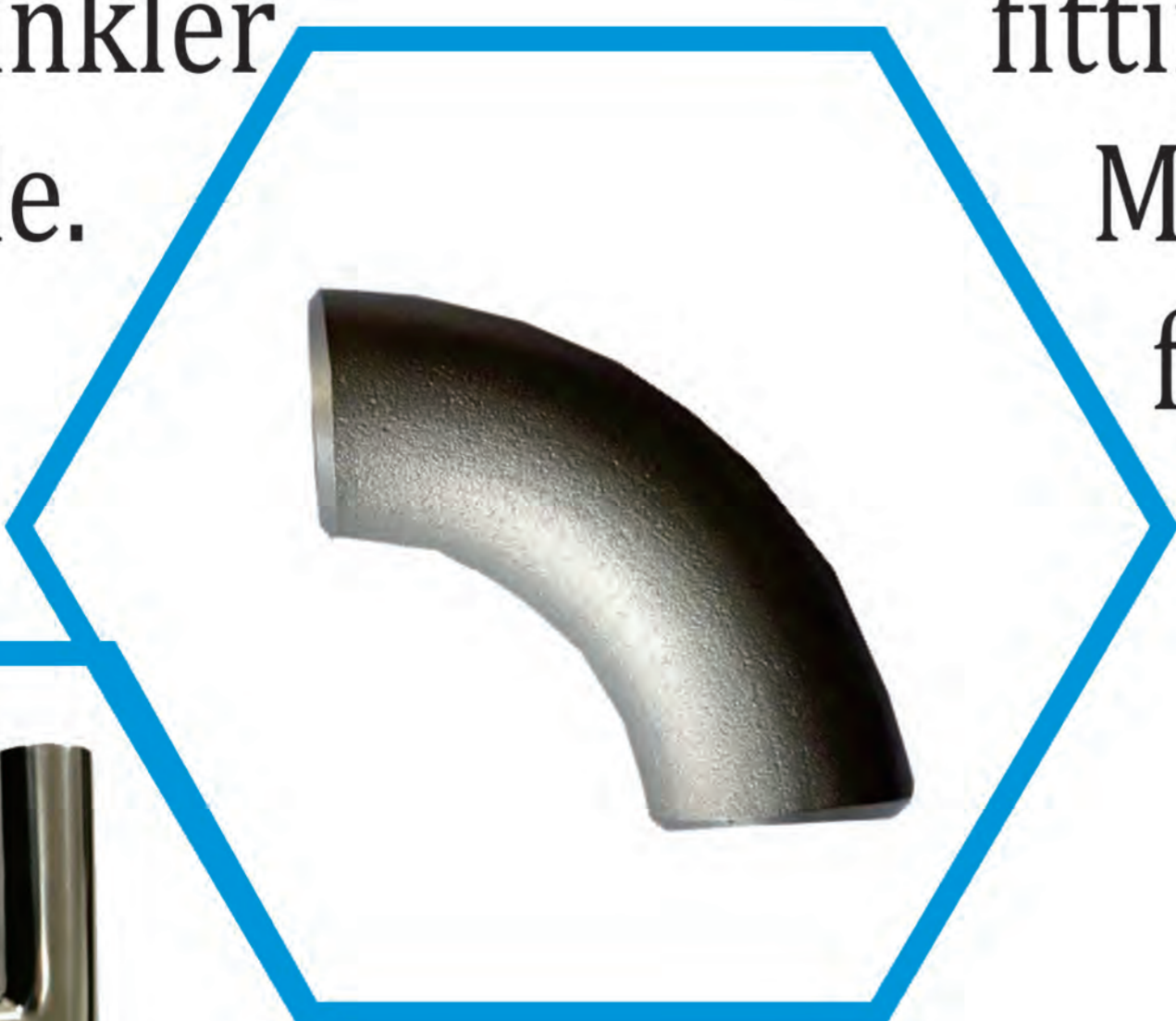


Stainless Steel Pipe Fittings

- Stainless steel 304 /316 flange
- Stainless steel quick connector
- Stainless steel Threaded screw fitting
- Stainless steel double ferrule fitting
- Stainless steel Sanitary fitting
- Stainless steel grooved connector
- Stainless steel high pressure fitting
- Stainless steel welded fitting
- Stainless steel compression fitting



Pipe fittings work with a variety of pipe and tubing materials including several types of steel, copper, iron, aluminium, and plastic. Pipe fitting is not plumbing, the two related but separate trades. Pipe fitters who specialize in fire prevention are called sprinkler fittings, another related, but separated trade. Materials, techniques, and usages vary different from country to country as different standards to install pipe.



CE

ISO



Fittings play an important role in both plumbing and heating systems to connect pipe or tubing, or to adapt to different shapes or sizes. The type of fittings required depends on the installation or repair.

Plastic Pipe Fittings

- PVC SCH40 ASTM D2466 fittings
- PVC NBR 5648 fittings
- PVC BS 4346 fittings
- PVC DIN standard fittings
- PVC ASTM D2665 drainage fittings
- PVC NBR 5688 drainage fittings
- PVC DIN standard fittings
- CPVC ASTM D2846 fittings
- PP threaded screwed fittings
- PE threaded screw fittings
- PPR pipe fittings
- PVC PPR CPVC valves
- Plastic bibcock taps

Fittings include: elbow, couplings, tees unions, reducers, unions, crosses, caps, plugs and nipples. These fittings are

devided to a variety of materials, such as:

copper, cast iron, brass, galvanized, PVC, and stainless steel. Also fittings have a wide selection of connection type, including: threaded, sweat, compression, flare, propress, sharkbite push-fit and PEX.

